

The implementation of a new educational and informational system on adaptation to climate change in Neamț county, Romania



UNIVERSITATEA BABEȘ-BOLYAI
TRADIȚIE ȘI EXCELENȚĂ



Andrei NIȚOAI¹, Ionuț - Răzvan PONCIȘ¹

¹Babeș-Bolyai University, Faculty of Geography, Cluj-Napoca, Romania

Overview

Adaptation is a process by which strategies to moderate, cope with, and take advantage of the consequences of climate changes events are enhanced, developed and implemented.

Introduction

In Romania, the adaptation to climate change is very poor. For example, under the impact of climate changes, the rainfall intensity increased and so many intense floods occurred. Because of the mismanagement of this extreme hazards, important damages are recorded. Highlighting the above, we consider that if a better information system and adaptation strategies would be implemented, many of recorded damages may be avoided.

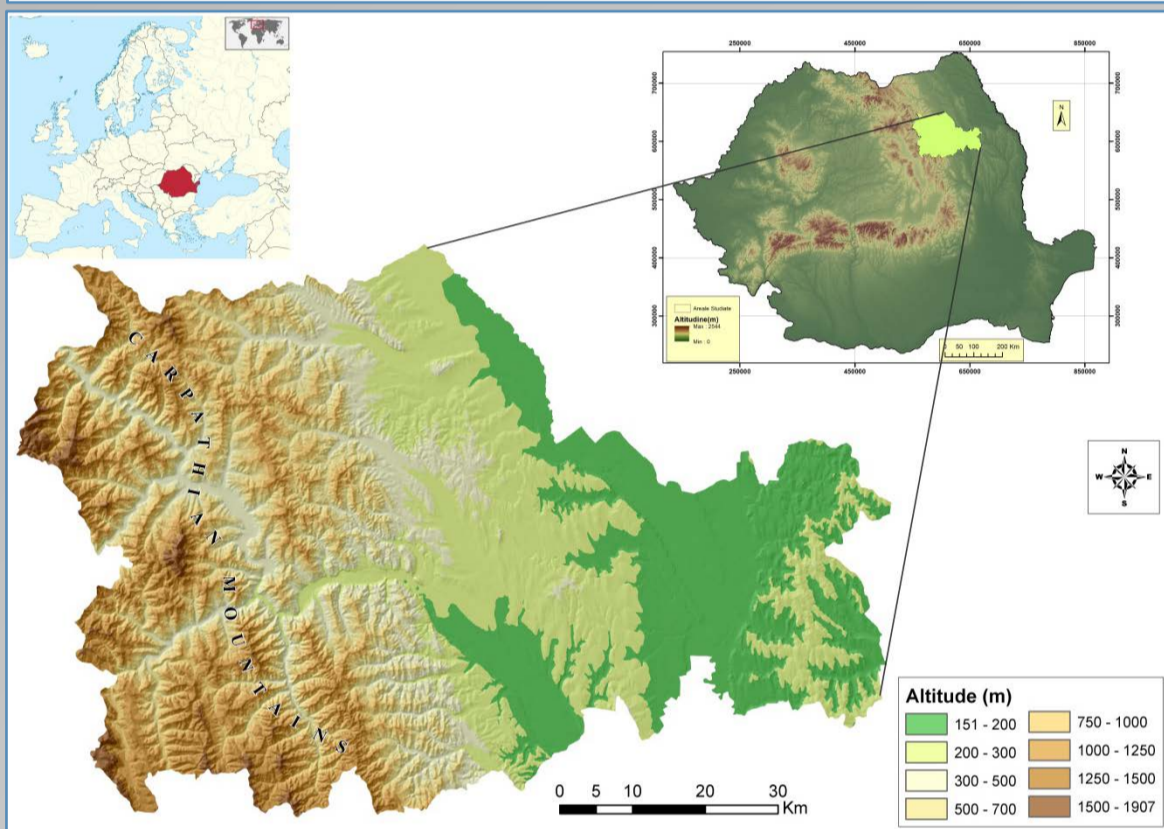


Fig.1. Localization of the study area

Objectives

The goal of the project is avoiding the damages related to climate change mismanagement events and the improvement of people reaction and adaptation. To reach that goal, two main objectives were proposed:

- *public awareness* - informing people through local media (TV & radio stations, newspapers)
- *children education* - 2 workshops/education campaigns in 5 different schools, sustained by 8 trainers from our faculty, in collaboration with teachers from those schools and Emergency Situations County Inspectorate members from Neamț county.

Implementation period: 12 months



Fig.2. Floods in Neamț county. Sources: (1) <http://www.evz.ro>; (2) <http://www.romania-actualitati.ro>; (3) <http://www.ziartarguneamt.ro>; (4) <http://www.antena3.ro>

Contact

Andrei NIȚOAI, Ionuț - Răzvan PONCIȘ
Babeș-Bolyai University, Faculty of Geography, Cluj-Napoca
Email: nitoaia.andrei@gmail.com ; poncis_93@yahoo.com
Phone: (+40) 74 413 5265 ; (+40) 74 212 8860

Project developed in the competition "Green path in models", under the auspices of Environmental Protection Agency, Sibiu



Partners:



SWOT Analysis

STRENGTHS

- The first system of its kind in Romania;
- Targets a large number of people, including students;
- It's a sustainable system because it involves topical issues;
- The existence of many specialists in the field;
- Relatively low budget required;
- High access to information through media.

WEAKNESSES

- Relatively large distance between counties involved in the project;
- Objective choosing of the schools involved in the workshops;
- Relatively low capacity of rural people to understand issues related to climate change and the adaptation need.

OPPORTUNITIES

- A better view for the new generations related to necessity of adaptation to climate change;
- A long-term initiative consisting in informing and educating people which may be continued by the new generations;
- A good cooperation between institutions (ESCI, local authorities, Romanian Education System) from different parts of the country.

THREATS

- A bad reaction of people to the issues raised by the system;
- The subsequent indifference of the institutions involved in the project regarding to these issues;

Background image source: guyanachronicle.com

The target group: at least 150 students from 5 different schools and also people from Neamț county.

Estimated required budget: about 67 000 EUR.

Estimated results

- The achievement of the two workshops through which an important number of students would receive a good climate change adaptation training;
- A better view for the new generations related to necessity of adaptation to climate changes;
- A good cooperation between institutions from different parts of the country;
- Reducing damages related to mismanagement of the climate change events.

Conclusions

Finally, through this project, we proposed two main solutions for the improvement of people reaction and adaptation to climate changes: *public awareness* - through local media (TV station advertisement, Radio interviews, press articles) and *children/students education* through those workshops/education campaigns, as extracurricular activities.

Implementing a project on students education and public awareness regarding to climate change adaptation means to develop a sustainable system which will help learning, by the new generations, a behaviour increasingly more appropriate in terms of adaptation to climate change.

"Give a man a fish and you feed him for a day; teach a man to fish and you feed him for a lifetime."

References

1. Lim, Bo, Burton, I. (2005), *Adaptation Policy Frameworks for Climate Change: Developing Strategies, Policies and Measures*, Cambridge University Press
2. *** (2005), *European Flood Report 2005-Central and Eastern Europe*, Guy Carpenter & Company Ltd.
3. *** (2011), FEMA - *Climate Change Adaptation Policy Statement* (<http://www.fema.gov/>)
4. *** <http://www.ipcc.ch>
5. *** <http://www.ijsunt.ro>
6. *** https://evaluateblog.wordpress.com/2013/05/25/selecting-project-indicators/es%26indicators_for_publication.pdf
7. *** http://betterevaluation.org/sites/default/files/EA_PM%26E_toolkit_module_2_objectiv